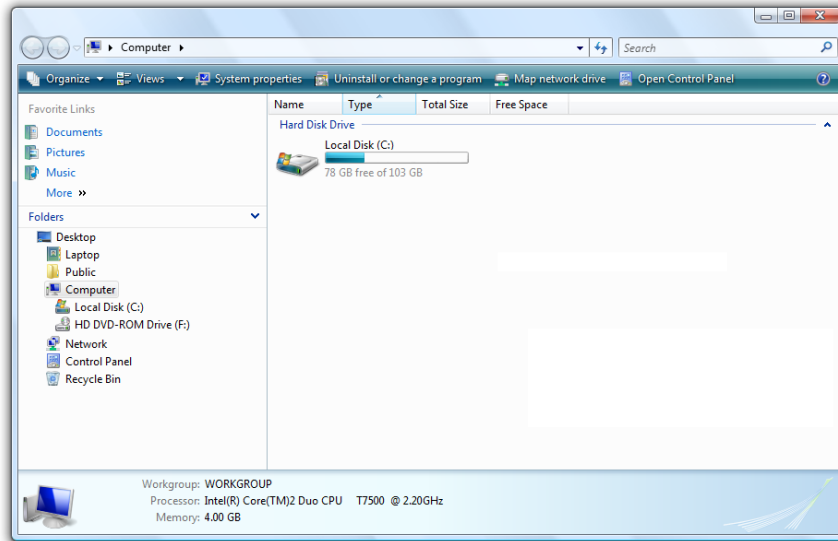
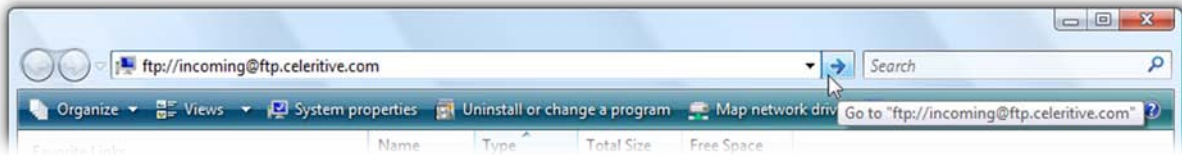


# UPLOADING A LARGE FILE USING FTP

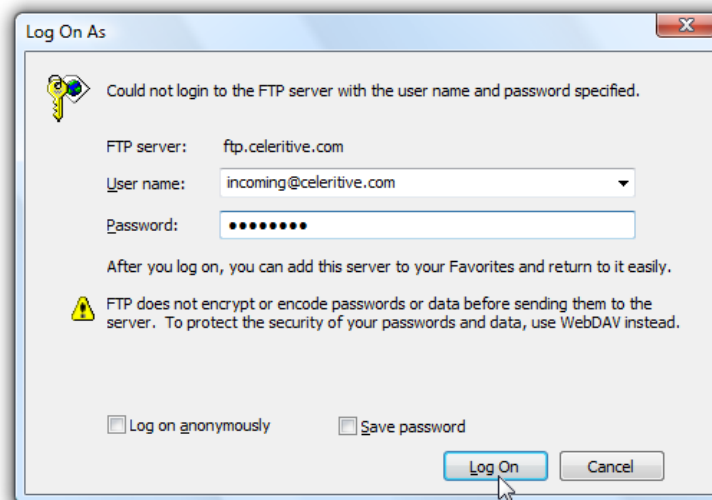
**STEP 1:** Open an **Explorer**, *not* Internet Explorer, window.



**STEP 2:** Type **ftp://incoming@ftp.celeritive.com** into the address bar and hit **Enter** or click the **Go to** button.



**STEP 3:** The User name should already be **incoming@celeritive.com**. If it is not displayed, you'll need to enter it. Enter **incoming** as the Password and click on the **Log On** button.

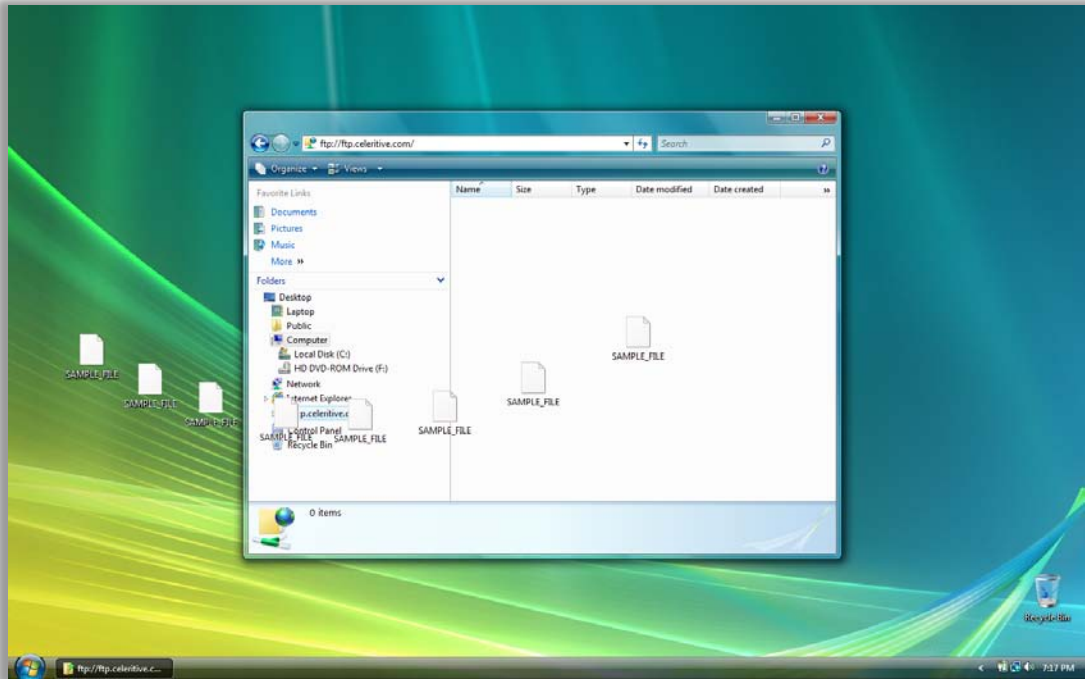


# UPLOADING A LARGE FILE USING FTP

**STEP 4:** Remove any spaces from the filename. FTP does not support spaces within filenames.

"SAMPLE FILE" → "SAMPLE\_FILE"

**STEP 5: Upload** the file. This is accomplished by dragging the file into the window or by pasting it.



A process dialog will be displayed showing the current status.

